

GRADUATION RATES

Although Cleveland State tracks 6-year graduation rates and 2nd year retention rates, these metrics are not useful to CSU licensure programs since our candidates are accepted into undergraduate licensure programs after they complete introductory education classes in their sophomore or junior year. Many licensure candidates also come into the college as transfer students from local community colleges. For this reason, Cleveland State has undertaken an analysis of graduation rates by cohorts of candidates enrolled in introductory education classes.

Licensure programs in all areas are sequenced across 5 clinical experiences. Candidates in early childhood, middle childhood, and special education enroll in the CREATE program, which is sequenced across five semesters—3 rotations and 2 internships. Candidates for adolescent/young adult (AYA) licenses and modern languages begin with Step 1 and 2 courses, continue with Classroom Interactions, and finish with Apprentice Teaching 1 and 2.

The data tables show the progression through the program for licensure students beginning with the 2016 cohorts. The graphs are limited to 5 years of historical data to enhance readability. One graph analyzes CREATE enrollment overall and broken down by licensure area. The other data tables analyze CSUTeach enrollment overall and broken down into Humanities (English, Social Studies, and Modern Languages) and STEM (mathematics and science). Both tables also include an overall analysis of the CREATE and CSUTeach programs respectively.

Typically, candidates take 5 semesters to finish a program from the time they take their introductory course, so by Spring 2025, CREATE candidates starting Spring 2023 and before and CSUTeach candidates starting in 22-23 and before would expect to complete if they follow the planned program of study without stopping out. Some candidates who begin in 23-24 complete in 24-25 if they have transferred courses from another institution. Overall retention for the Spring 23 cohort in the CREATE program was 78%, up from 52% last year. However, this completion rate is always somewhat skewed because a fairly large number of candidates do not continue beyond the introductory clinical experience for a variety of reasons, including academic issues and conscious decisions that teaching is not a good career fit. Once candidates are accepted into a licensure program (P-5, middle childhood, special education), we see higher graduation rates reflected in the licensure-specific tables. For the CREATE programs, retention of accepted candidates who began in Spring 2023 ranged from 94% to 100%.

In the CSUTeach program the 22-23 cohort had overall retention of 28% (STEM 20%; Humanities 31%). The completers for the 23-24 cohort reflect candidates who finished earlier than expected so the retention percentages for that year are not reflected in the graph. These retention rates for CSUTeach reflect a drop from last year's rate in both areas. We have learned from this analysis over time that some candidates take longer than the projected time to finish because they complete additional course work off cycle, so we recalculate retention percentages each year to capture candidates who complete later than anticipated.

Overall retention rates (78% for CREATE, 28% for CSUTeach) are an area of focus. Greater retention will assist us in preparing more teachers for the state and addressing enrollment concerns. Faculty and advisors are provided with information about candidates who discontinue to identify possible advising interventions, course sequencing/scheduling modifications, or other strategies to increase retention and to help candidates finish programs in a timely fashion.

The following data tables and charts are included below:

- CREATE Enrollment Trends Tables (Spring 16, Spring 17, Spring 18, Spring 19, Spring 20, Spring 21, Spring 22, Spring 23 and Spring 24 cohorts)
- CREATE Enrollment Trend Graph (Spring 20, Spring 21, Spring 22, Spring 23 and Spring 24 cohorts)
- CSUTeach Enrollment Trends (16-17, 17-18, 18-19, 19-20, 20-21, 21-22, 22-23 and 23-24 cohorts)
- CSUTeach Enrollment Trend Graph (20-21, 21-22, 22-23 and 23-24 cohorts)

CREATE Programs Enrollment Trends – April 2025

ECE	Rot 1	Rot 2	Rot 3	Int 1	Int 2	Retention % Across Program
Sp 16	24	24	24	20	23	95.83%
Sp 17	54	55	53	43	50	92.59%
Sp 18	59	46	57	45	50	84.75%
Sp 19	46	43	37	32	35	76.09%
Sp 20	71	66	58	47	48	67.61%
Sp 21	46	45	39	33	35	76.09%
Sp 22	47	47	43	35	30	63.83%
Sp 23	53	30	53	52	50	94.34%
Sp 24	34	34	33			

EDM	Rot 1	Rot 2	Rot 3	Int 1	Int 2	Retention % Across Program
Sp 16	15	15	11	9	9	60.00%
Sp 17	14	14	13	13	12	85.71%
Sp 18	23	23	21	21	21	91.30%
Sp 19	19	19	19	18	16	84.21%
Sp 20	22	21	20	16	13	59.09%
Sp 21	16	16	15	14	14	87.50%
Sp 22	14	14	14	11	10	71.43%
Sp 23	16	16	16	15	15	93.75%
Sp 24	9	9	9			

ESE MM	Rot 1	Rot 2	Rot 3	Int 1	Int 2	Retention % Across Program
Sp 16	8	8	8	8	7	87.50%
Sp 17	9	9	9	8	9	100.00%
Sp 18	15	15	14	11	10	66.67%
Sp 19	16	16	16	10	12	75.00%
Sp 20	18	18	16	12	11	61.11%
Sp 21	9	9	7	7	5	55.56%
Sp 22	8	8	8	8	6	75.00%
Sp 23	1	1	1	1	1	100.00%
Sp 24	0	0	0			

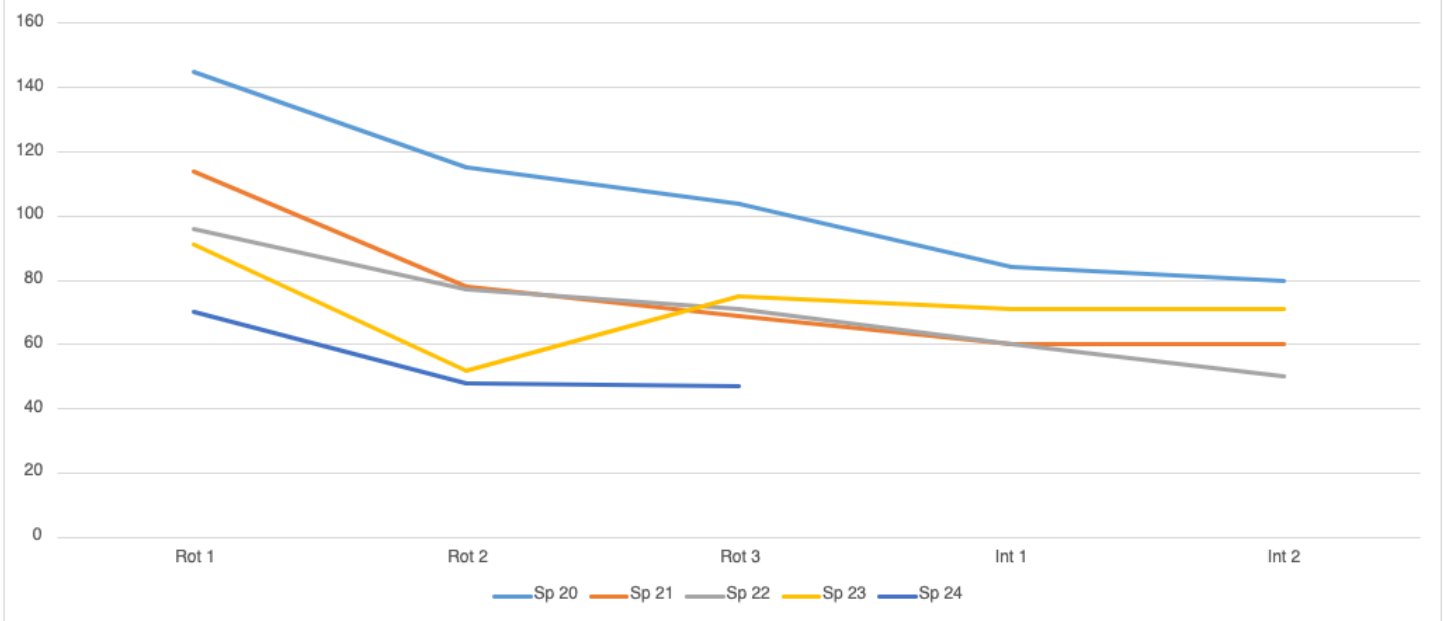
ESE MI	Rot 1	Rot 2	Rot 3	Int 1	Int 2	Retention % Across Program
Sp 16	5	5	5	4	5	100.00%
Sp 17	6	6	6	5	5	83.33%
Sp 18	7	7	7	2	6	85.71%
Sp 19	11	11	11	1	9	81.82%

Sp 20	10	10	10	9	8	80.00%
Sp 21	8	8	8	6	6	75.00%
Sp 22	8	8	6	6	4	50.00%
Sp 23	5	5	5	3	5	100.00%
Sp 24	5	5	5			

Blanks	Rot 1	Rot 2	Rot 3	Int 1	Int 2	Retention % Across Program
Sp 16	17					0.00%
Sp 17	21					0.00%
Sp 18	39					0.00%
Sp 19	11					0.00%
Sp 20	24					0.00%
Sp 21	35					0.00%
Sp 22	19					0.00%
Sp 23	16					0.00%
Sp 24	22					0.00%

CREATE ALL	Rot 1	Rot 2	Rot 3	Int 1	Int 2	Retention % Across Program
Sp 16	69	52	48	41	44	63.77%
Sp 17	104	84	81	69	76	73.08%
Sp 18	143	91	99	79	87	60.84%
Sp 19	103	89	83	61	72	69.90%
Sp 20	145	115	104	84	80	55.17%
Sp 21	114	78	69	60	60	52.63%
Sp 22	96	77	71	60	50	52.08%
Sp 23	91	52	75	71	71	78.02%
Sp 24	70	48	47			

CREATE Enrollment Trend by Cohort



CSU Teach Programs Enrollment Trends – April 2025

EUT-HUM	Step 1	Step 2	CI	AT1	AT2	Retention % Across Program
16-17	15	0	6	7	7	46.67%
17-18	38	3	21	22	21	55.26%
18-19	40	28	23	19	15	37.50%
19-20	30	20	18	17	15	50.00%
20-21	26	17	17	13	11	42.31%
21-22	30	18	23	19	18	60.00%
22-23	26	14	19	10	8	30.77%
23-24	23	13	21	7	7	30.43%
24-25	23	14	7			

EUT-STEM	Step 1	Step 2	CI	AT1	AT2	Retention % Across Program
16-17	49	35	23	22	21	42.86%
17-18	24	14	6	6	6	25.00%
18-19	20	11	7	4	4	20.00%
19-20	20	14	11	9	8	40.00%
20-21	6	4	1	1	1	16.67%
21-22	12	8	8	6	7	58.33%
22-23	10	5	4	2	2	20.00%
23-24	18	12	13	4	3	16.67%
24-25	10	4	4			

CSUTeach ALL	Step 1	Step 2	CI	AT 1	AT 2	Retention % Across Program
16-17	64	35	29	29	28	43.75%
17-18	62	17	27	28	27	43.55%
18-19	60	39	30	23	19	31.67%
19-20	50	34	29	26	23	46.00%
20-21	32	21	18	14	12	37.50%
21-22	42	26	31	25	25	59.52%
22-23	36	19	23	12	10	27.78%
23-24	41	25	34	11	10	24.39%
24-25	33	18	11			

CSUTeach Enrollment by Cohort

