

## GRADUATION RATES

Although Cleveland State tracks 6-year graduation rates and 2<sup>nd</sup> year retention rates, these metrics are not useful to CSU licensure programs since our candidates are accepted into undergraduate licensure programs after they complete introductory education classes in their sophomore or junior year. Many licensure candidates also come into the college as transfer students from local community colleges. For this reason, Cleveland State has undertaken an analysis of graduation rates by cohorts of candidates enrolled in introductory education classes.

Licensure programs in all areas are sequenced across 5 clinical experiences. Candidates in early childhood, middle childhood, and special education enroll in the CREATE program, which is sequenced across five semesters—3 rotations and 2 internships. Candidates for adolescent/young adult (AYA) licenses and modern languages begin with Step 1 and 2 courses, continue with Classroom Interactions, and finish with Apprentice Teaching 1 and 2.

The data tables show the progression through the program for licensure students beginning with the 2016 cohorts. The graphs are limited to 5 years of historical data to enhance readability. One graph analyzes CREATE enrollment overall and broken down by licensure area. The other data tables analyze CSU Teach enrollment overall and broken down into Humanities (English, Social Studies, and Modern Languages) and STEM (mathematics and science). Both tables also include an overall analysis of the CREATE and CSU Teach programs respectively.

Typically, candidates take 5 semesters to finish a program from the time they take their introductory course, so by Spring 2026, CREATE candidates starting Spring 2024 and before and CSU Teach candidates starting in 23-24 and before would expect to complete if they follow the planned program of study without stopping out. Some candidates who begin in 24-25 complete in 25-26 if they have transferred courses from another institution. Overall retention for the Spring 24 cohort in the CREATE program was 52.78%, down from 78% last year. This rate is more typical than last year, due to the fairly large number of candidates who do not continue beyond the introductory clinical experience for a variety of reasons, including academic issues and conscious decisions that teaching is not a good career fit. Once candidates are accepted into a licensure program (P-5, middle childhood, special education), we see higher graduation rates reflected in the licensure-specific tables. For the CREATE programs, retention of accepted candidates who began in Spring 2024 ranged from 40% to 85%, which is lower than last year but difficult to interpret because of low N's, where the attrition of one candidate can have a significant impact on the retention rate.

In the CSU Teach program the 23-24 cohort had overall retention of 24% (STEM 16%; Humanities 30%). These retention rates for CSU Teach reflect another drop from last year's rate in both areas. However, the completers for the 24-25 cohort show an increase in retention (30% overall) even though these candidates finished earlier than expected, so that could indicate a promising change in the trend. We have learned from this analysis over time that some candidates take longer than the projected time to finish because they complete additional course work off cycle, so we recalculate retention percentages each year to capture candidates who complete later than anticipated.

Overall retention rates (52.78% for CREATE, 24% for CSU Teach) are an area of focus. Greater retention will assist us in preparing more teachers for the state and addressing enrollment concerns. Faculty and advisors are provided with information about candidates who discontinue to identify possible advising interventions, course

sequencing/scheduling modifications, or other strategies to increase retention and to help candidates finish programs in a timely fashion.

The following data tables and charts are included below:

- CREATE Enrollment Trends Tables (Spring 16 – Spring 25 cohorts)
- CREATE Enrollment Trend Graph (Spring 21 – Spring 25 cohorts)
- CSUTeach Enrollment Trends (16-17 through 25-26 cohorts)
- CSUTeach Enrollment Trend Graph (21-22 through 25-26 cohorts)

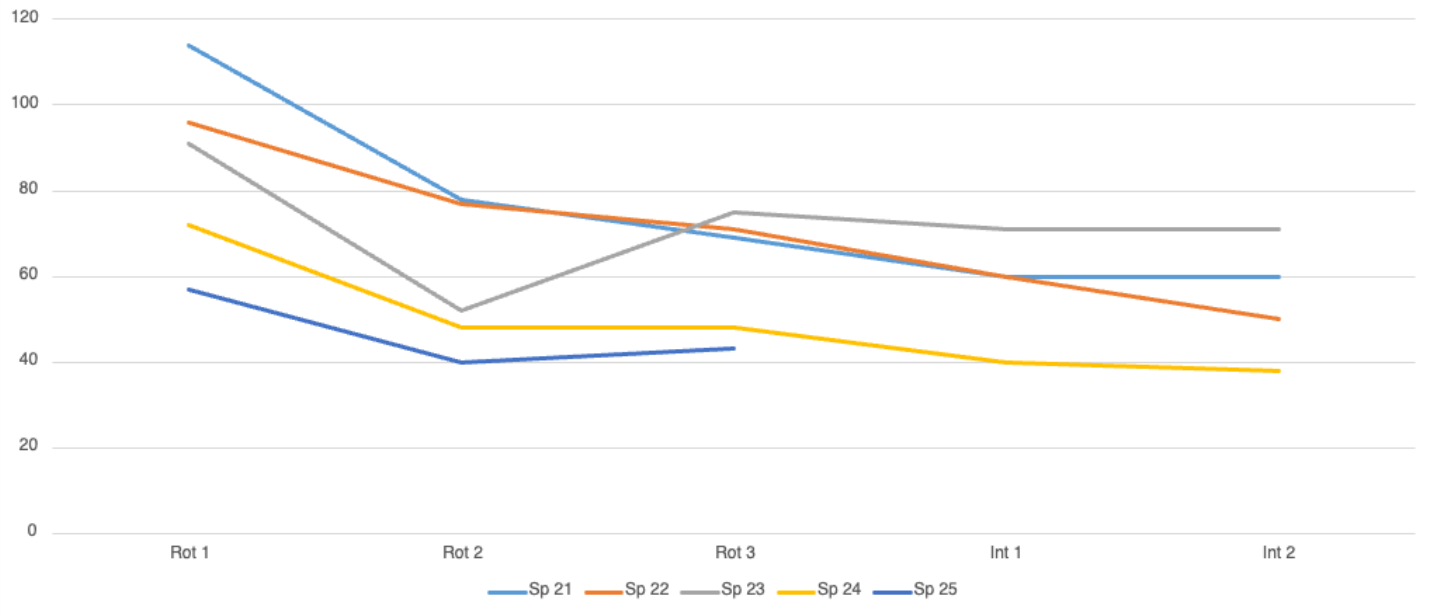
CREATE Programs Enrollment Trends – April 2026

<b>ECE</b>	<b>Rot 1</b>	<b>Rot 2</b>	<b>Rot 3</b>	<b>Int 1</b>	<b>Int 2</b>	<b>Retention % Across Program</b>
Sp 16	24	24	24	20	23	95.83%
Sp 17	54	55	53	43	50	92.59%
Sp 18	59	46	57	45	50	84.75%
Sp 19	46	43	37	32	35	76.09%
Sp 20	71	66	58	47	48	67.61%
Sp 21	46	45	39	33	35	76.09%
Sp 22	47	47	43	35	30	63.83%
Sp 23	53	30	53	52	50	94.34%
Sp 24	34	34	33	30	29	85.29%
Sp 25	30	26	29			
<b>EDM</b>	<b>Rot 1</b>	<b>Rot 2</b>	<b>Rot 3</b>	<b>Int 1</b>	<b>Int 2</b>	<b>Retention % Across Program</b>
Sp 16	15	15	11	9	9	60.00%
Sp 17	14	14	13	13	12	85.71%
Sp 18	23	23	21	21	21	91.30%
Sp 19	19	19	19	18	16	84.21%
Sp 20	22	21	20	16	13	59.09%
Sp 21	16	16	15	14	14	87.50%
Sp 22	14	14	14	11	10	71.43%
Sp 23	16	16	16	15	15	93.75%
Sp 24	9	9	9	8	6	66.67%
Sp 25	5	5	5			
<b>ESE MM</b>	<b>Rot 1</b>	<b>Rot 2</b>	<b>Rot 3</b>	<b>Int 1</b>	<b>Int 2</b>	<b>Retention % Across Program</b>
Sp 16	8	8	8	8	7	87.50%
Sp 17	9	9	9	8	9	100.00%
Sp 18	15	15	14	11	10	66.67%
Sp 19	16	16	16	10	12	75.00%
Sp 20	18	18	16	12	11	61.11%
Sp 21	9	9	7	7	5	55.56%
Sp 22	8	8	8	8	6	75.00%
Sp 23	1	1	1	1	1	100.00%
Sp 24	2	1	2	0	1	50.00%
Sp 25	6	6	6			
<b>ESE MI</b>	<b>Rot 1</b>	<b>Rot 2</b>	<b>Rot 3</b>	<b>Int 1</b>	<b>Int 2</b>	<b>Retention % Across Program</b>
Sp 16	5	5	5	4	5	100.00%
Sp 17	6	6	6	5	5	83.33%
Sp 18	7	7	7	2	6	85.71%

Sp 19	11	11	11	1	9	81.82%
Sp 20	10	10	10	9	8	80.00%
Sp 21	8	8	8	6	6	75.00%
Sp 22	8	8	6	6	4	50.00%
Sp 23	5	5	5	3	5	100.00%
Sp 24	5	4	4	2	2	40.00%
Sp 25	3	3	3			
<b>Blanks</b>	<b>Rot 1</b>	<b>Rot 2</b>	<b>Rot 3</b>	<b>Int 1</b>	<b>Int 2</b>	<b>Retention % Across Program</b>
Sp 16	17					0.00%
Sp 17	21					0.00%
Sp 18	39					0.00%
Sp 19	11					0.00%
Sp 20	24					0.00%
Sp 21	35					0.00%
Sp 22	19					0.00%
Sp 23	16					0.00%
Sp 24	22					0.00%
Sp 25	13					0.00%

<b>CREATE ALL</b>	<b>Rot 1</b>	<b>Rot 2</b>	<b>Rot 3</b>	<b>Int 1</b>	<b>Int 2</b>	<b>Retention % Across Program</b>
Sp 16	69	52	48	41	44	63.77%
Sp 17	104	84	81	69	76	73.08%
Sp 18	143	91	99	79	87	60.84%
Sp 19	103	89	83	61	72	69.90%
Sp 20	145	115	104	84	80	55.17%
Sp 21	114	78	69	60	60	52.63%
Sp 22	96	77	71	60	50	52.08%
Sp 23	91	52	75	71	71	78.02%
Sp 24	72	48	48	40	38	52.78%
Sp 25	57	40	43			0.00%

CREATE Enrollment Trend by Cohort



CSU Teach Programs Enrollment Trends – April 2026

<b>EUT-HUM</b>	<b>Step 1</b>	<b>Step 2</b>	<b>CI</b>	<b>AT1</b>	<b>AT2</b>	<b>Retention % Across Program</b>
16-17	15	0	6	7	7	46.67%
17-18	38	3	21	22	21	55.26%
18-19	40	28	23	19	15	37.50%
19-20	30	20	18	17	15	50.00%
20-21	26	17	17	13	11	42.31%
21-22	30	18	23	19	18	60.00%
22-23	26	14	19	10	8	30.77%
23-24	23	13	21	7	7	30.43%
24-25	23	15	19	6	6	26.09%
25-26	16	8	6			

<b>EUT-STEM</b>	<b>Step 1</b>	<b>Step 2</b>	<b>CI</b>	<b>AT1</b>	<b>AT2</b>	<b>Retention % Across Program</b>
16-17	49	35	23	22	21	42.86%
17-18	24	14	6	6	6	25.00%
18-19	20	11	7	4	4	20.00%
19-20	20	14	11	9	8	40.00%
20-21	6	4	1	1	1	16.67%
21-22	12	8	8	6	7	58.33%
22-23	10	5	4	2	2	20.00%
23-24	18	12	13	4	3	16.67%
24-25	10	7	8	4	4	40.00%
25-26	9	7	3			

<b>CSUTeach ALL</b>	<b>Step 1</b>	<b>Step 2</b>	<b>CI</b>	<b>AT 1</b>	<b>AT 2</b>	<b>Retention % Across Program</b>
16-17	64	35	29	29	28	43.75%
17-18	62	17	27	28	27	43.55%
18-19	60	39	30	23	19	31.67%
19-20	50	34	29	26	23	46.00%
20-21	32	21	18	14	12	37.50%
21-22	42	26	31	25	25	59.52%
22-23	36	19	23	12	10	27.78%
23-24	41	25	34	11	10	24.39%
24-25	33	22	27	10	10	30.30%
25-26	25	15	9			

### CSUTeach Enrollment by Cohort

