

EDA Center at the University of Minnesota

Bruce Schwartau

Director, University of MN EDA Center
Extension Center for Community Vitality

Lee Groeschl / Michelle Christopherson

University of Minnesota - UM EDA Center

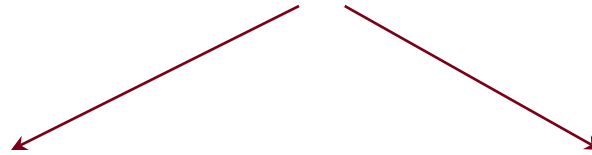


UNIVERSITY OF MINNESOTA

Driven to Discover®

Organizational Chart

EDA Funding



UMN Crookston

Grant Management

Veden Center for

Rural Economic Development

Extension

Directorship (current)

Community Economics
programming



at the University of Minnesota



2016-2021 Program Focus

- Advancing high growth entrepreneurship
- Business expansion including small- and medium-sized and ethnically diverse enterprises
- Developing and recruiting a high-skilled regional workforce



Economic Contribution of American Health Care Spending in NW Minnesota

Key questions:

- Quantify amount of contribution
- Explore occupational opportunities
- Quantify substance abuse counseling and educational opportunities
- Potential for supply chain development in health care industry



**Northwest Indian Community
Development Center**

@nwidc · Community Organization



- In the 7-county NW MN area, Am. Indian health care spending supported 2,450 jobs.
- Medicare, Medicaid, and Indian Health Services spent an estimated \$180 million. \$85 million in labor income.
- 4 of to 10 home health care & mental health providers are Indian owned.
- 4 potential supply chains emerged.



Inaugural Conference

Connecting Entrepreneurial Communities in Minnesota

Sept. 5-6, 2019 | Waseca, Minnesota

Announcing Our Keynote Speakers



Amanda Brinkman

Host of Deluxe's hit HULU series,
Small Business Revolution – Main Street



Tom Smude

Co-Owner,
Smude Enterprises LLC



UNIVERSITY OF MINNESOTA EXTENSION

Join us. Register now at
z.umn.edu/cec_conference



**You
Were
Made
for
This!**

10.29.19

**Forging
Our
Entrepreneur
Ecosystem**



The MNwest Entrepreneur Summit

is convened by  **i**nnovates



SOUTHERN MINNESOTA
INITIATIVE FOUNDATION

Collaborating for Regional Vitality



Rural Entrepreneurial Venture (REV)

The Rural Entrepreneurial Venture (REV) program is all about finding and igniting existing entrepreneurs in communities. By adopting a “grow your own” approach to entrepreneur development, the REV model helps community grow from within.



Business Expansion

- Locally-Sourcing Food Enterprises: Research, Outreach & Education (Request by Region 5 RDC)
- Economic Impacts Study on Closing of Coal-Generated Power Plant (Request by Arrowhead RDC)
- Dairy Plant Closures in Rochester, MN (local EDA)
- Potential Economic Impact of Hemp Processing
- Exploring Foreign Direct Investments in non-metro Minnesota (Request by local EDA and MN Trade Office)



Business Expansion

- Understanding & Enhancing the Main Street and Agriculture Connection (Requested by Rethos)
- Dollar Store Impacts (Requested by Multiple RDCs)
- Impacts of Main Street Business Successions (Requested by multiple RDCs)
- Increasing Opportunities in Promise Zones
- Consulting/Feasibility Projects



Developing a High-Skilled Regional Workforce

- “Launch Minnesota” program is a statewide effort to accelerate the growth of startups.
- Recently received request from a RDC about assisting in worker housing evaluations.



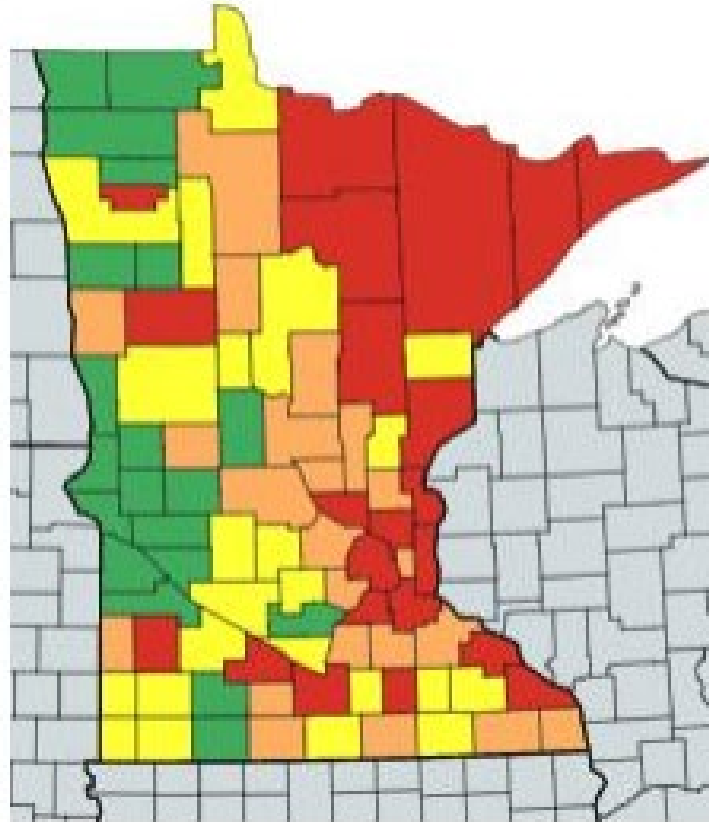
Overview of Current Initiatives

- USDA Rural Business Development Grant (MN)
 - 1) Submitted for provide Technical Assistance Grants in NW MN
 - 2) Provide Entrepreneurial Service Support
 - 3) Provide More Internship/Experiential Learning Opportunities for UM/UMC Students (GOLD PASS)
 - 4) Summer of EngageMnT (COVID-19 response)



COVID-19

- Hospitality
- Travel arrange.
- Employment services
- Transportation
- Mining



Source: EMSI



EDA Showcase 1 6/9/2020
Host Cleveland State Iryna Lendel
Susan Brown, Acting Regional Director Chicago

Public Safety
Com
S-pp

Car

Co
Be

A₁ U₁ D₂ I₁ E₁ N₁ C₃ E₁

easier to move workers out than
bringing them back - before changes.

S₁ K₅ I₁ L₁ L₁ 'S

Re Media 0/2020 9:00 am

Key Markets Management

do everything to keep key employees
HSC Local District Recovery Guide
Commercial

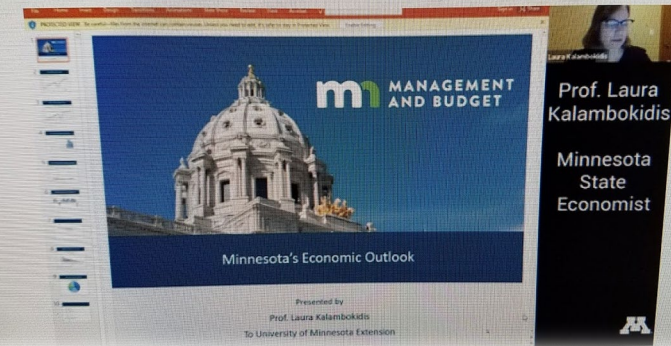
Patrick Donohue - million caps • Eden Prairie
Capital Entrep. CEO Hill Capital Corp



Well-attended webinars

- Supporting minority-owned businesses
- How a small town bank is helping
- Minnesota's economic outlook
- Reaching out to businesses in a sensitive time
- Supporting Main Street retail
- Retaining businesses: Thief River Falls
- COVID-19: How are economists thinking about this?
- Economic Fallout: What do unemployment numbers mean?

Presenter slides



Development Stage

- Online Communities of Prosperity in Food Supply Chains & Travel/Tourism and Business Retention
- Additional training for local EDA members
- Additional initiatives on community resiliency
- Special programming for minority business owners and employees



*Thank
you*



For more info:

- z.umn.edu/outreach-engagement
- edacenter.umn.edu
- z.umn.edu/CommunityHousing
- z.umn.edu/cec_conference
- z.umn.edu/CommunityVitality



UNIVERSITY OF MINNESOTA

Driven to Discover®