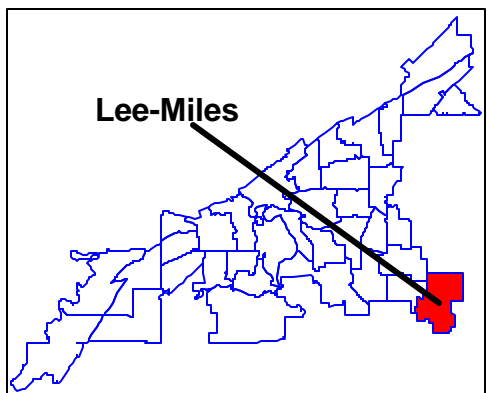
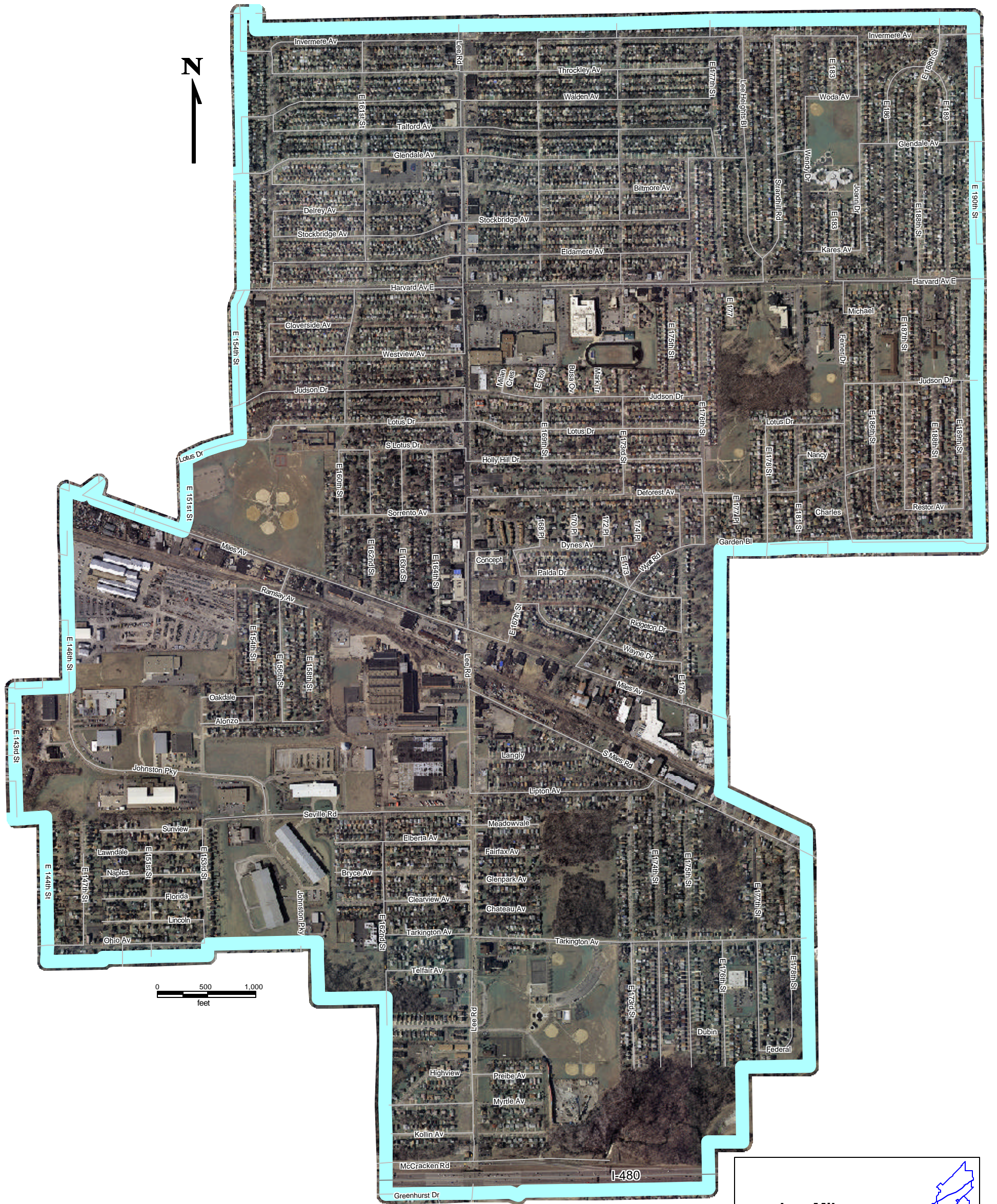


Lee-Miles



 Neighborhood (SPA)

Source:
Cleveland Planning Commission, 2002 (SPA-Neighborhood)
Cuyahoga County Engineer's Office, 2006 (Orthophoto)

Prepared by:
Northern Ohio Data & Information Service (NODIS)
Maxine Goodman Levin College of Urban Affairs
Cleveland State University
(216) 687-2210 <http://nodisnet1.urban.csuohio.edu>

Prepared 2/21/07 AD