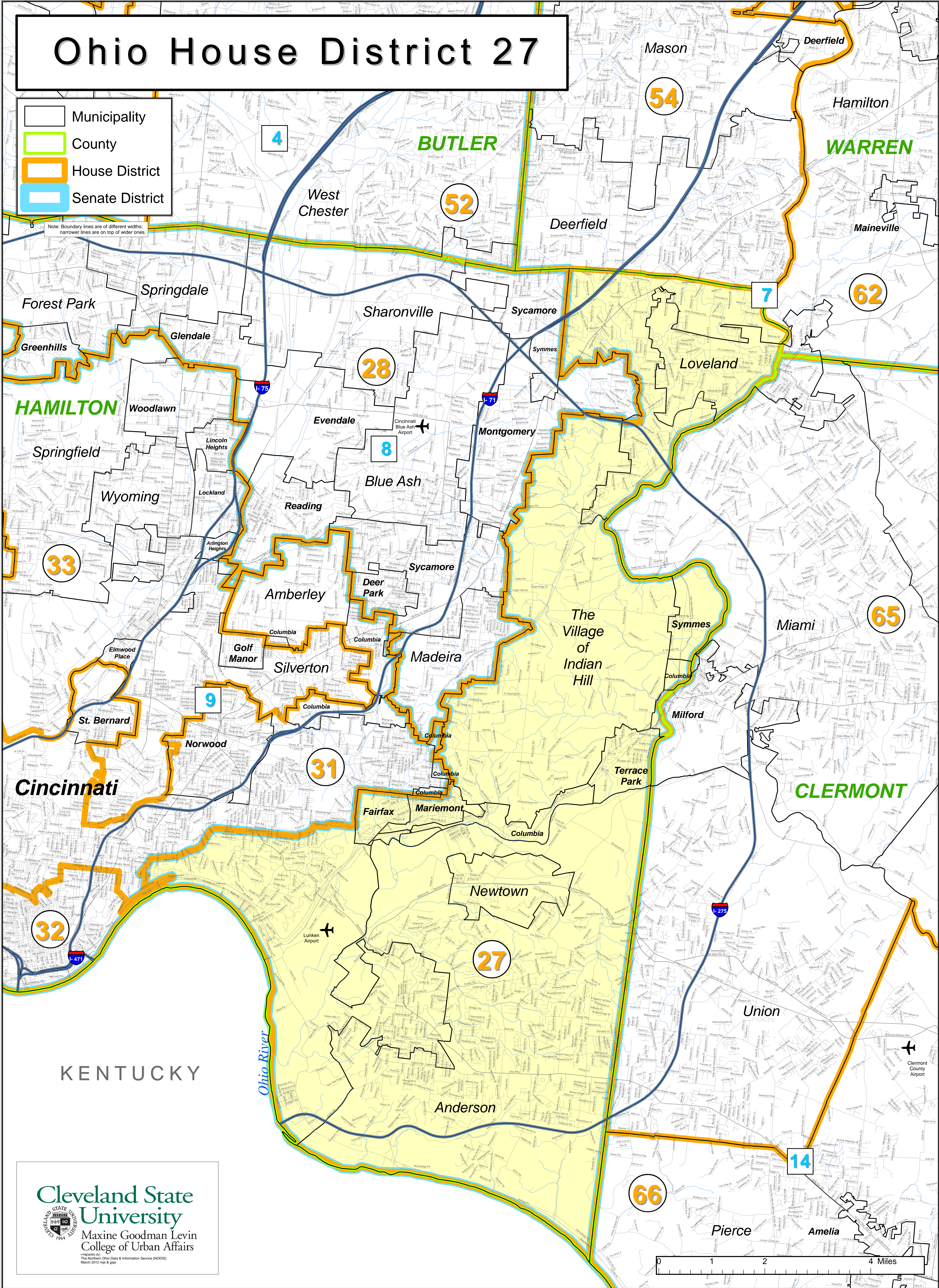


Ohio House District 27

- Municipality
- County
- House District
- Senate District

Note: Boundary lines are of different widths; narrower lines are on top of wider ones.



Cleveland State University

Maxine Goodman Levin College of Urban Affairs

Prepared by:
The Northern Ohio Data & Information Service (NODIS)
March 2012 nps & gps

0 1 2 4 Miles