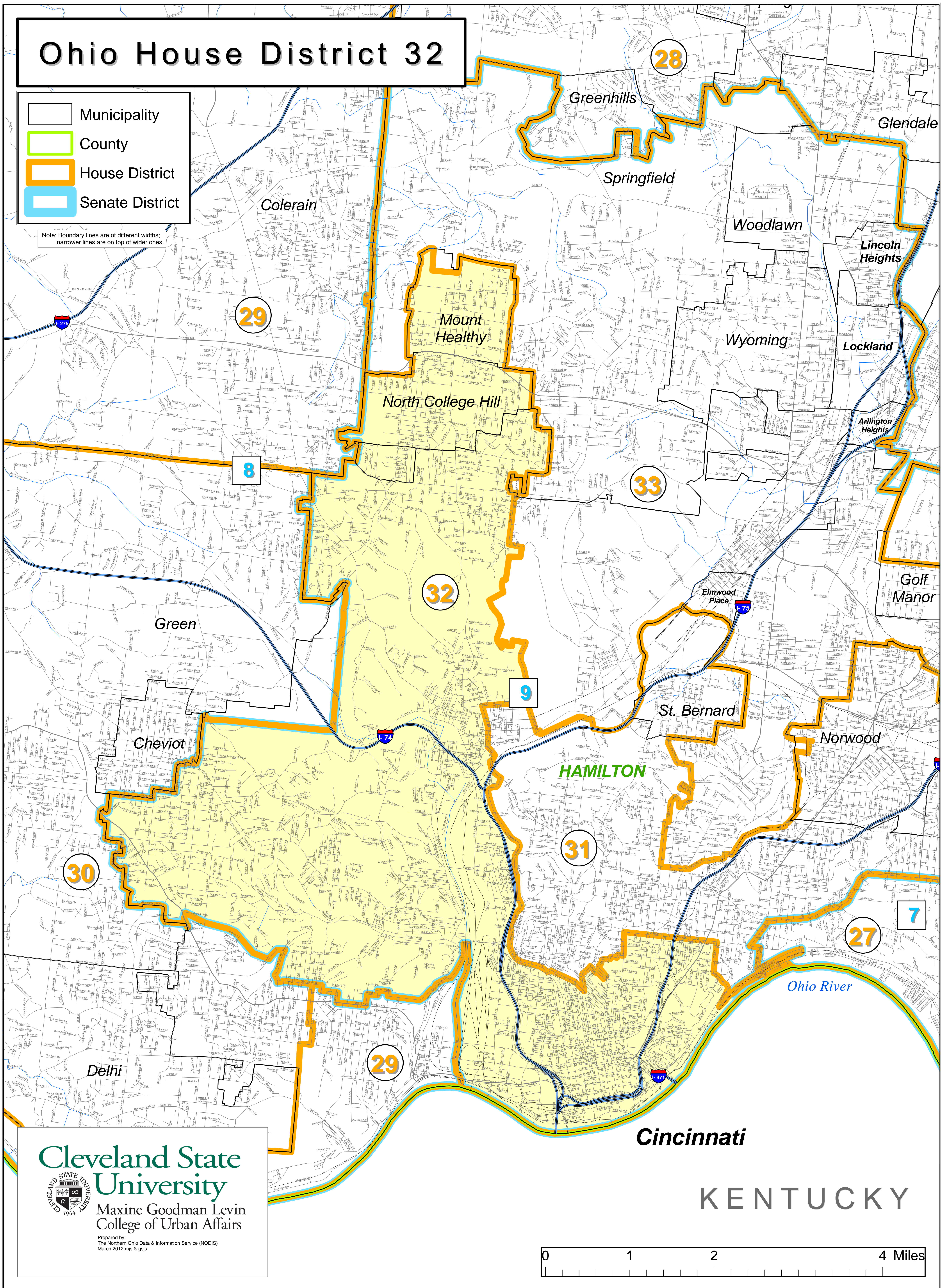


# Ohio House District 32

- Municipality
- County
- House District
- Senate District

Note: Boundary lines are of different widths; narrower lines are on top of wider ones.



**Cleveland State University**  
Maxine Goodman Levin  
College of Urban Affairs

Prepared by:  
The Northern Ohio Data & Information Service (NODIS)  
March 2012 mjs & gjs

0 1 2 4 Miles