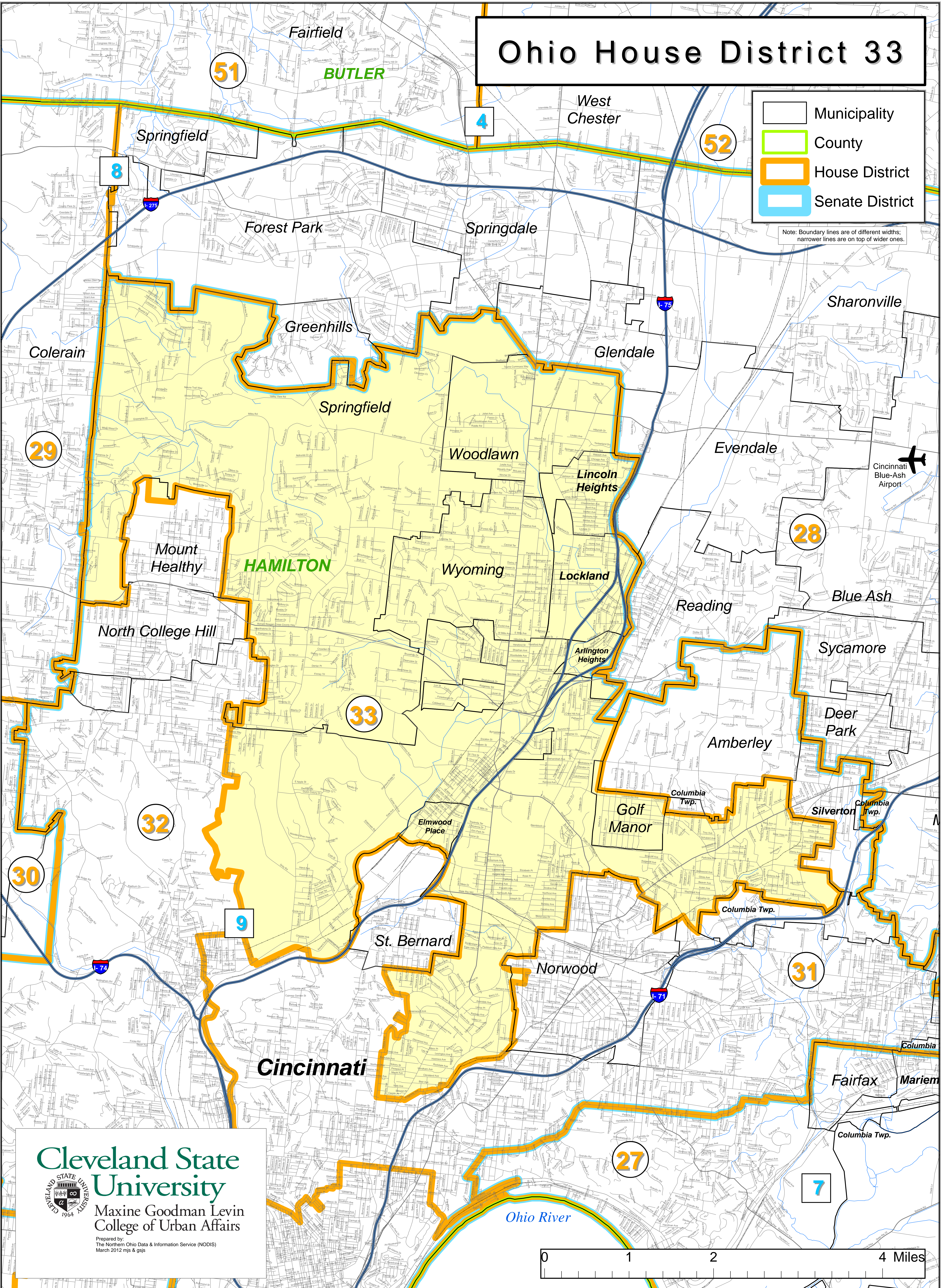


Ohio House District 33

- Municipality
- County
- House District
- Senate District

Note: Boundary lines are of different widths; narrower lines are on top of wider ones.



Cleveland State University
Maxine Goodman Levin
College of Urban Affairs

Prepared by:
The Northern Ohio Data & Information Service (NODIS)
March 2012 mjs & gjs

