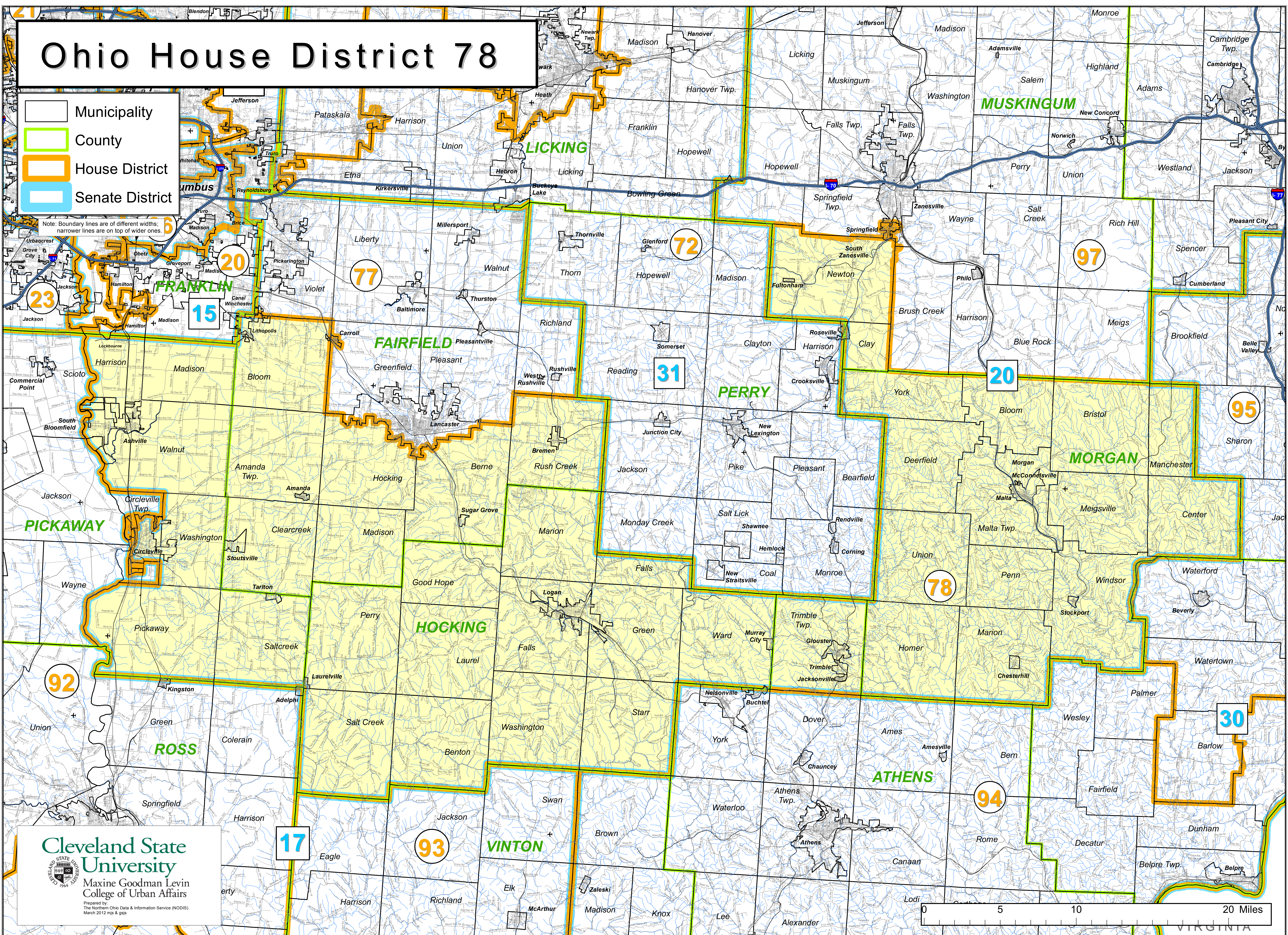


# Ohio House District 78

- Municipality
- County
- House District
- Senate District

Note: Boundary lines are of different widths; narrower lines are on top of wider ones.



**Cleveland State University**  
Maxine Goodman Levin College of Urban Affairs  
Prepared by:  
The Northern Ohio Data & Information Service (NODIS)  
March 2012 mjs & gjs

