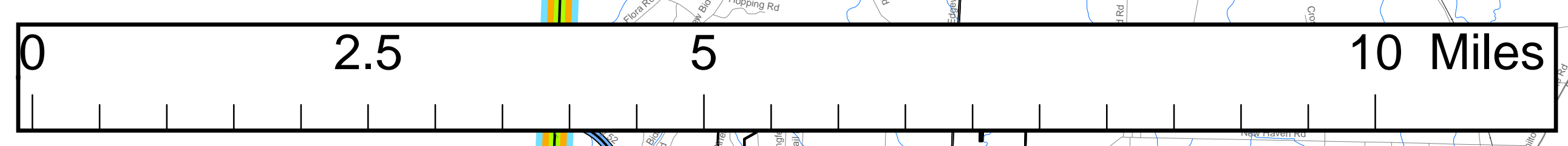
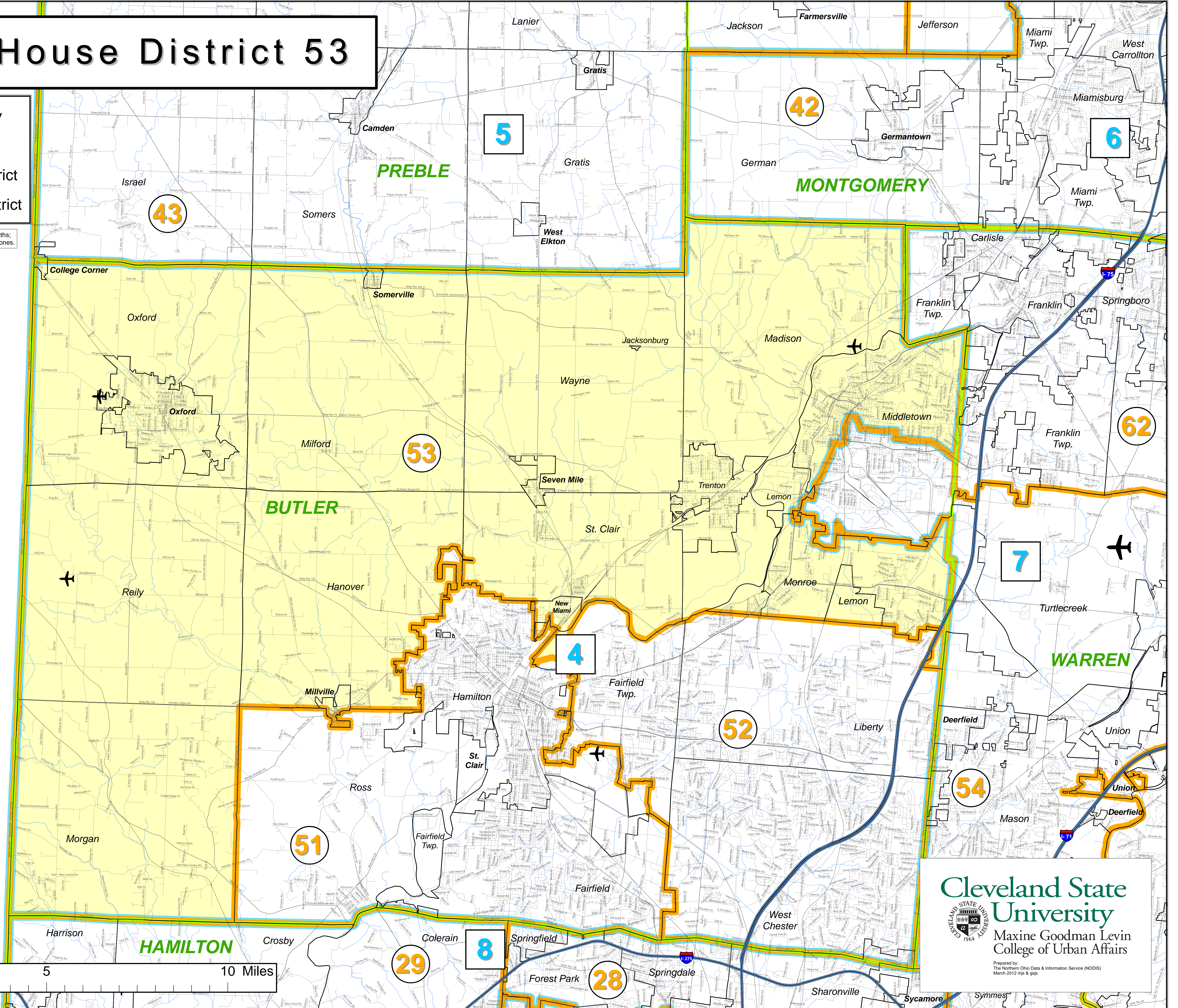


Ohio House District 53

- Municipality
- County
- House District
- Senate District

Note: Boundary lines are of different widths; narrower lines are on top of wider ones.

INDIANA



Cleveland State University
Maxine Goodman Levin College of Urban Affairs
Prepared by:
The Northern Ohio Data & Information Service (NODIS)
March 2012 mjs & gjs