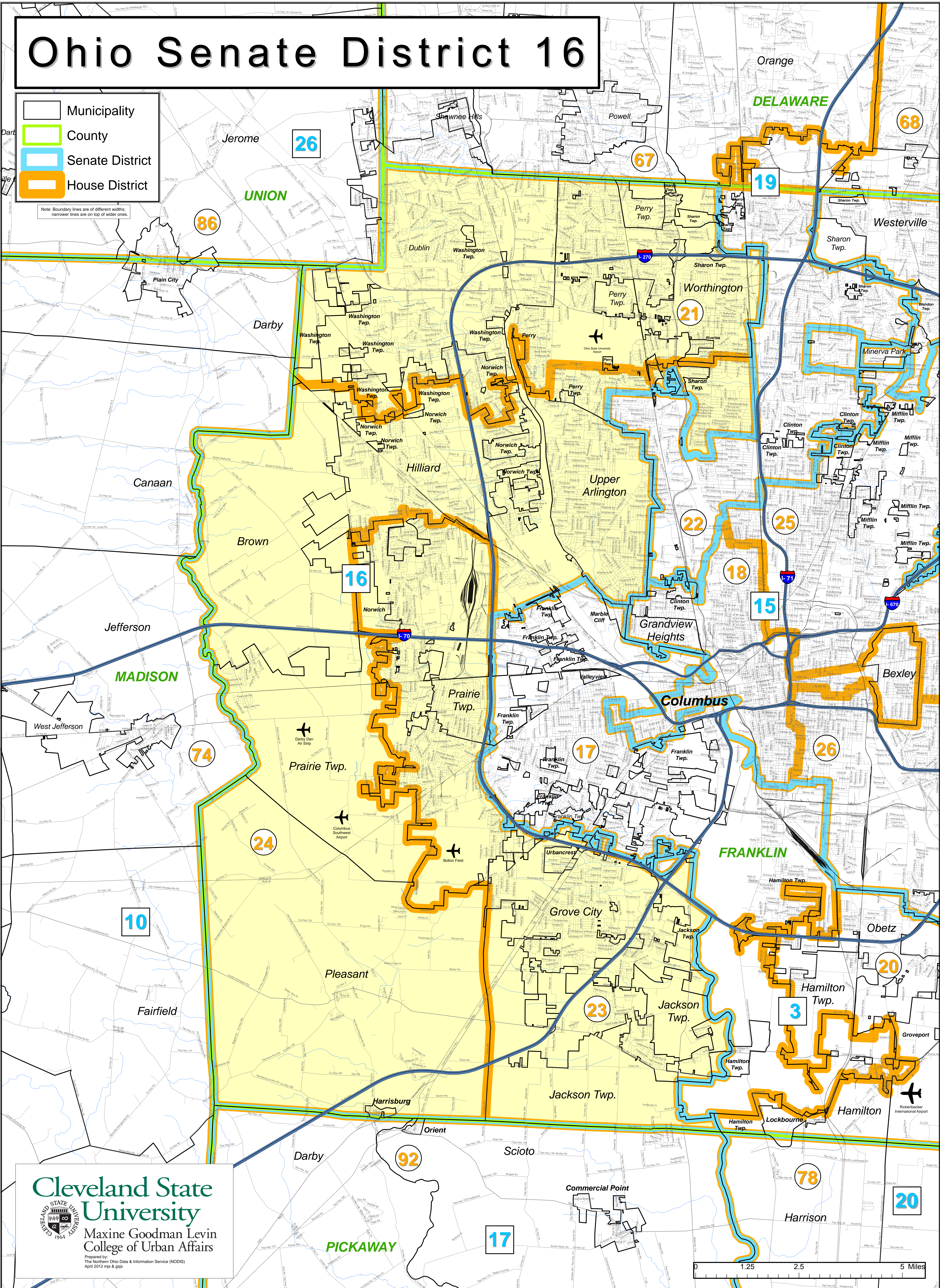


# Ohio Senate District 16

- Municipality
- County
- Senate District
- House District

Note: Boundary lines are of different widths; narrower lines are on top of wider ones.



**Cleveland State University**  
Maxine Goodman Levin College of Urban Affairs  
Prepared by:  
The Northern Ohio Data & Information Service (NODIS)  
April 2012 mjs & gsp

