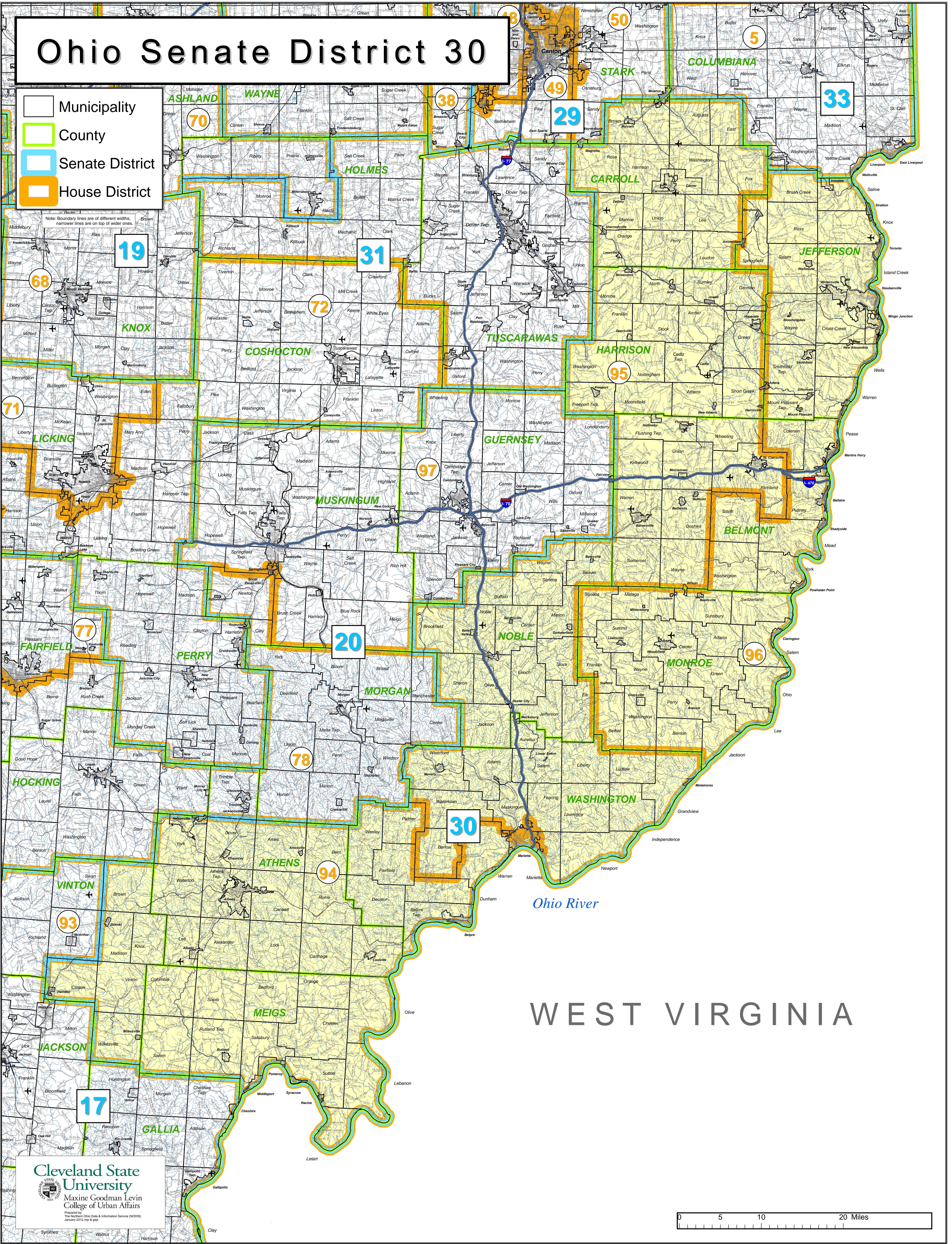


Ohio Senate District 30

- Municipality
- County
- Senate District
- House District

Note: Boundary lines are of different widths; narrower lines are on top of wider ones.



Cleveland State University
Maxine Goodman Levin College of Urban Affairs
Prepared by:
The Northern Ohio Data & Information Service (NODIS)
January 2012 719 & 816

